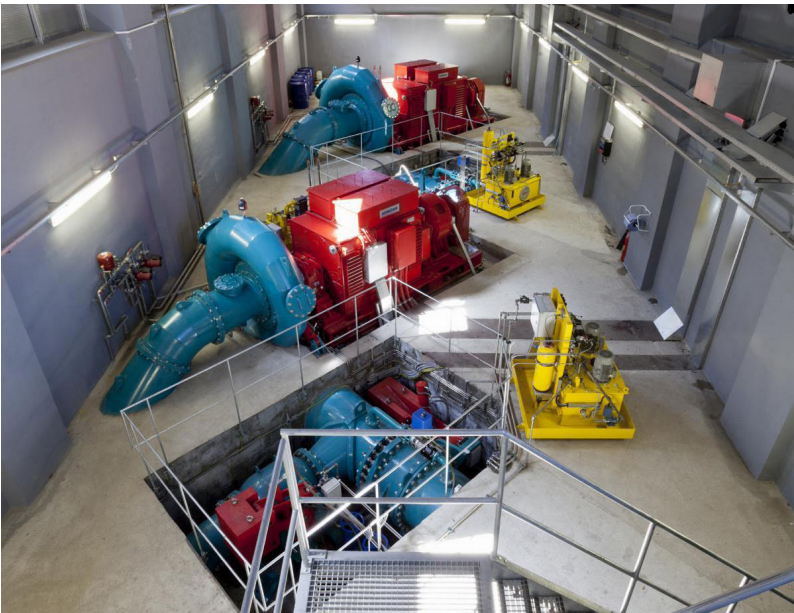


# *Liquid Energy – Solid Engineering*



## Our company

As a family business GUGLER Water Turbines GmbH has been involved in the development, design and supply of water turbines and small and medium-sized hydropower plants with commitment and dedication.

Based on long-time experience, continuous research and intensive development we create global value together with renowned partners through technological advantages and stable reliability today more than ever.



## Our mission

We strive to make a significant contribution to achieving an economic utilisation of hydropower plants worldwide in terms of green energy through optimally adapted plant technology in accordance with ecology.



## Our vision

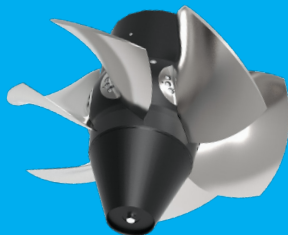
Our vision is to rank among the technologically leading suppliers of economically efficient and long-lasting hydropower technologies capable of generating hydroelectricity at a profit and to provide an adequate return for our shareholders, today and in the future.

## Our products

### water turbines

#### Pelton turbines

Pelton turbines are used for medium to higher heads in the range of 50 m to 800 m and for smaller flows.



#### Kaplan turbines

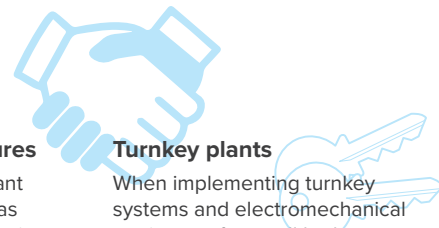
The Kaplan turbine is the classic for head ranges from 1 m to 40 m, in which large amounts of water are moved.

#### Francis turbines

As the most common type of turbine for hydropower plants, the Francis turbine is used for medium head ranges from 15 m to 300 m and medium flows.



## Our services



#### Hydraulic steel structures

In the production of relevant auxiliary equipment such as trash racks, trash rack cleaning machines, gates and flaps, we put great emphasis on quality for longevity and usability, from selecting the raw materials to workmanship.

#### Turnkey plants

When implementing turnkey systems and electromechanical equipment for small hydropower plants, we put high value on thorough conceptual design, dimensioning, production, assembly and control as well as on after sales services and maintenance.

## Our strengths

#### Service & flexibility

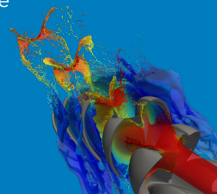
From the planning and consulting based on special requirements and thorough assembly as well as commissioning to extensive support throughout the entire service life, GUGLER stands for customer-oriented service and first-rate products. ***Water to wire – from one source.***

#### Rehabilitation & modernisation

In addition to the construction of new systems, GUGLER also offers custom-made solutions for the retrofitting and modernisation of existing hydropower plants.

#### Research & development

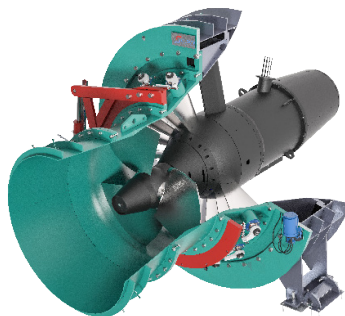
GUGLER is continuously growing its know-how through insights from the operation of hydropower plants, the in-house development team using CFD and FEM and cooperation with renowned institutes and test labs.





## Control systems

As one of the most important components of a modern hydropower plant, a high-performance, automatic control system ensures smooth operation, minimal downtime and maximum efficiency.

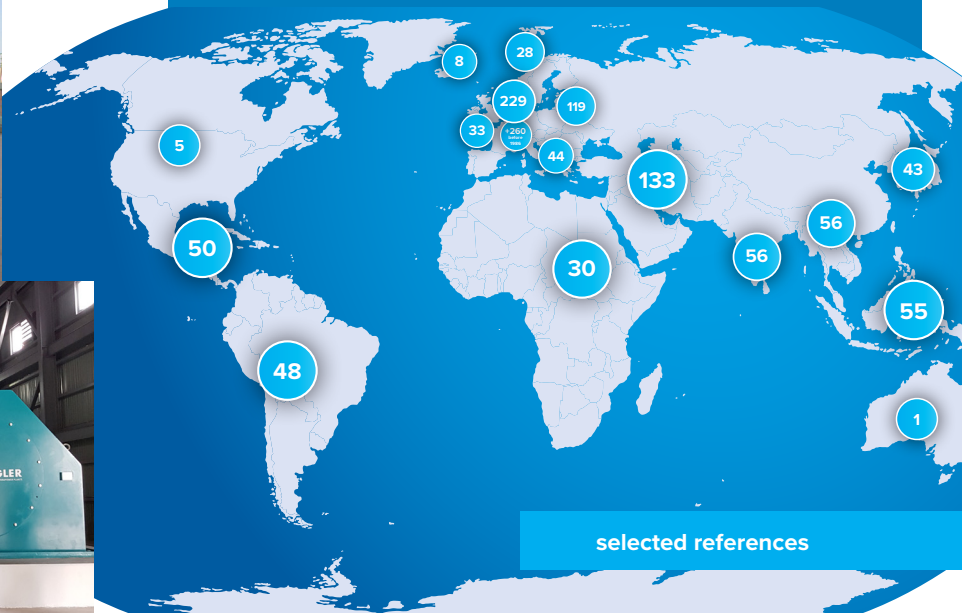


# GUGLER

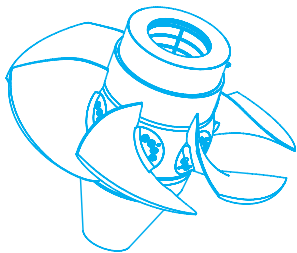
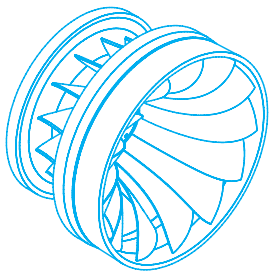
## worldwide

European quality for international success: Based on the extensive experience gained from hundreds of successfully installed projects worldwide, we are proud to be among the technologically leading suppliers of water turbines with an output ranging from 50 kW to 40 MW.

The productive cooperation with well-established national and international specialists in the fields of manufacturing, transmissions, generators, low and medium voltage switchgear as well as transformers creates synergy effects, substantial cost advantages and constant quality improvements for our clients through tactical outsourcing.



selected references



## **GUGLER Water Turbines GmbH**



Gewerbepark 41, 4101 Feldkirchen a.d. Donau, Austria  
+43 7233 20933  
[info@gugler.com](mailto:info@gugler.com)  
[www.gugler.com](http://www.gugler.com)